

Mill Pond ESTATES



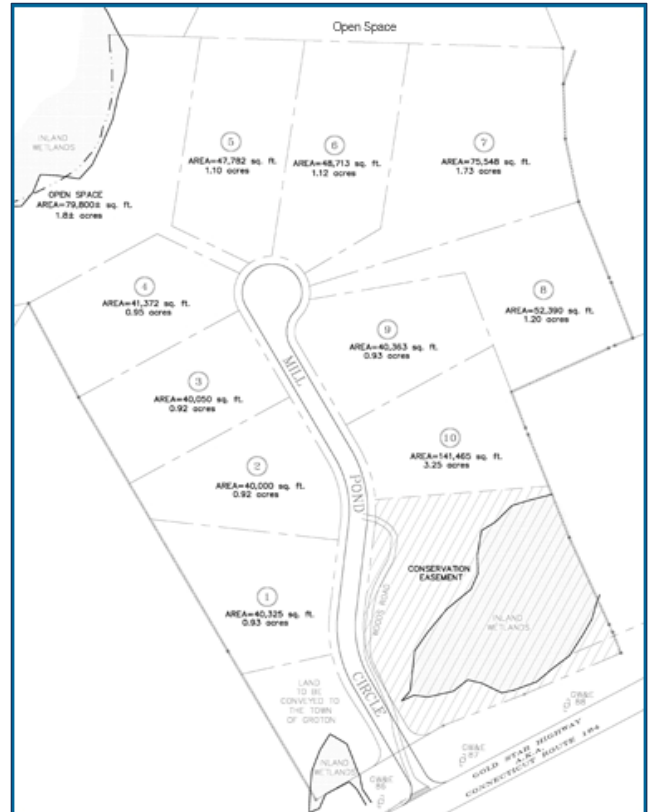
Mill Pond Estates brings you back to the days of young, kids playing on the sidewalks, talking to neighbors, taking walks with the family on a warm summer's day.

Mill Pond Estates takes you back to the simple life. Millpond Estates is a spacious 10-lot residential subdivision located in Groton, CT. Wooded, secluded lots provide a special tranquility, while the location provides access and convenience to downtown Groton with Rt. 95 just minutes away.

Underground utilities and backed by open space, you can enjoy the peaceful surround and wooded areas. Street illumination provides safety and peace of mind during those early evening strolls and the creative design of the street itself provides a natural setting along the sidewalks of Millpond Circle.

Amenities include:

- 10 Beautiful wooded & private 1-3 acre lots
- Backed by acres of wooded designated open space
- Underground utilities
- Street Lighting
- Sidewalks
- Municipal water
- Within 10 minutes to downtown Groton and Rt. 95



www.millpondgroton.com

For more information, please contact



Harriet Cohen, REALTOR
Prudential Connecticut Realty
305 Flanders Road
East Lyme, CT 06333
harrietcohen@prudentialct.com
Cell 860-608-6542
Fax 860-739-6669

Lot #	St.#	Front.	Acre	Price
1	25	107	0.93	SOLD
2	47	139	0.92	\$109,000
3	65	150	0.92	\$109,000
4	79	60	0.95	\$109,000
5	84	35	1.1	\$112,900
6	80	56	1.12	\$112,900
7	76	20*	1.73	\$110,000
8	72	20*	1.2	\$110,000
9	60	213	0.93	\$110,000
10	44	110	3.25**	\$110,000